

LCC Modelling System

B 70-28 O gauge medium goods shed

**All drawings are not in scale.
Some proportions on drawings may differ from reality.**

For additional elements for modification and extension please visit our website at www.lcut.co.uk or email us at contact@lcut.co.uk
Building footprint: 325mm long x 240mm wide

Bundle contains:

- 2x LCC 00-02
- 2x LCC 70-00
- 1x LCC 70-01
- 1x LCC 70-09
- 4x LCC 70-24
- 2x LCC 74-02
- 2x LCC 74-03
- 4x LCC 74-06
- 2x LCC 74-08
- 1x LCC 74-09
- 2x LCC 74-10
- 3x LCC 74-11
- 2x LCC 74-12
- 2x LCC 74-18
- 1x LCC 74-24
- 1x LCC 74-25
- 1x LCC 74-26
- 1x LCC 74-27
- 2x LCC 74-28
- 3x LCC 74-29
- 2x LCC 74-30
- 1x LCC 74-31
- 2x LCC 74-32
- 1x LCC 74-33
- 1x LCC 74-34
- 4x LCC 74-49



We recommend PVA or any other paper/wood glue for the main fibre board parts and resin based glue for 3D printed parts if present.

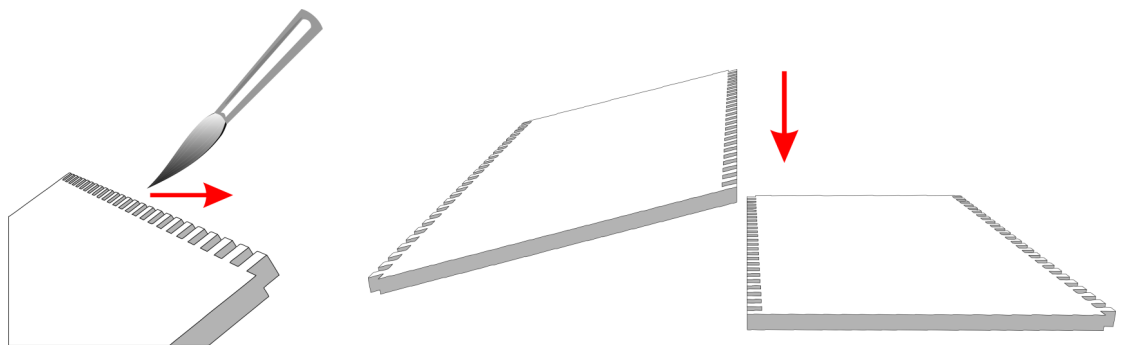
Painting recommendation:

We recommend using acrylic or enamel paints. There is no need to undercoat the surface but it can be done if desired.

The material used is porous and relatively forgiving, heavy coats are unlikely to flood the brickwork. If you experience any warping in the material leave it to fully dry and then gently bend it back into shape. Always test any paints in an area that will not be seen or on spare parts/off cuts.

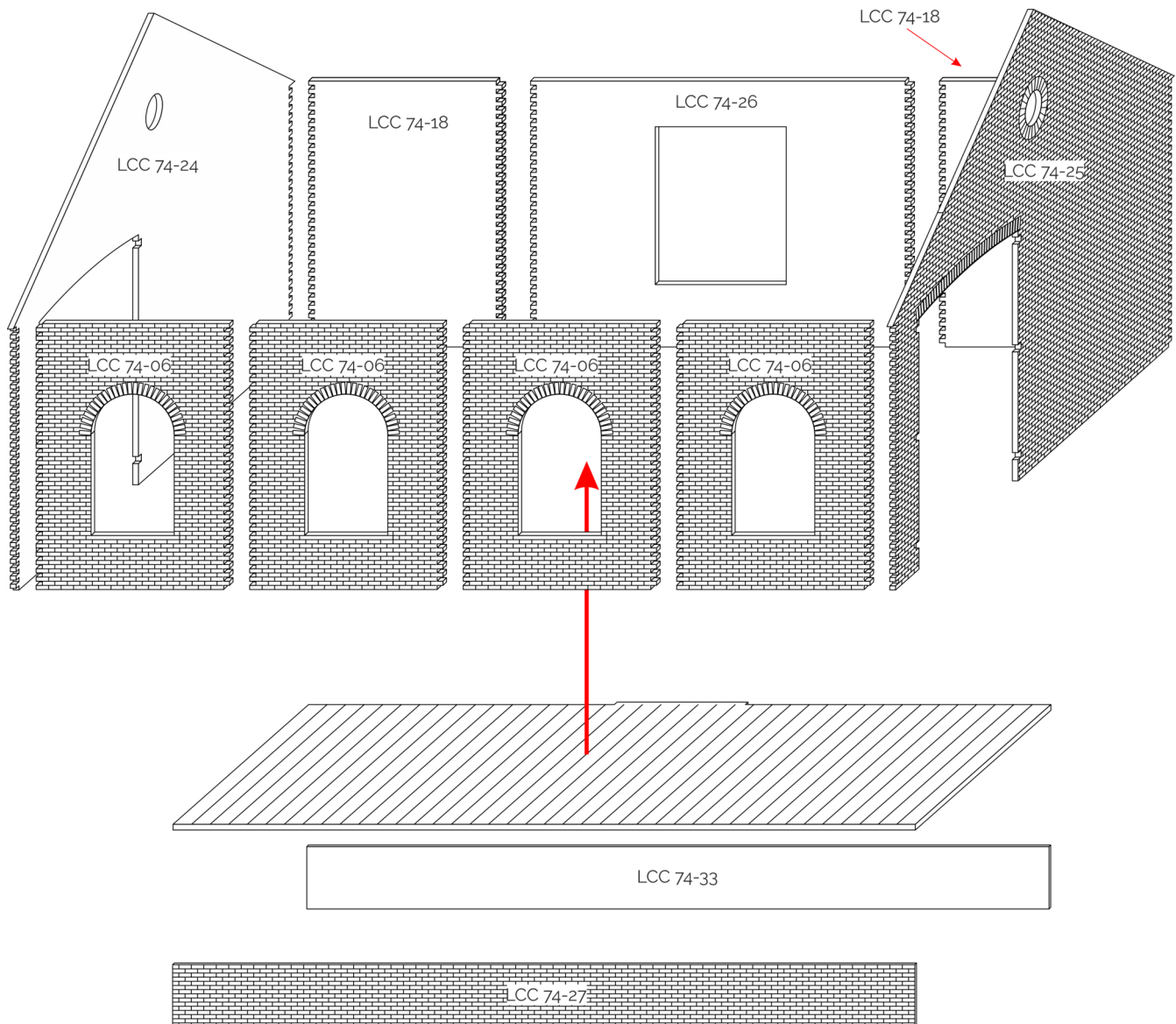
CONNECTING WALL ELEMENTS

Windows and doors should be positioned flush with the back of wall panels. Depending on painting style it may be better to paint the windows and doors separately before gluing them into wall panels.



Recommended way of gluing parts together is to apply PVA glue to the interlocking bricks working from back of the part to the front. This ensures there will be no glue overflow on the front, visible side. Then lay the part without glue on flat surface laying on its front (engraved side). Press the part with glue onto the part without glue. Gently push parts together from sides to close the gap.

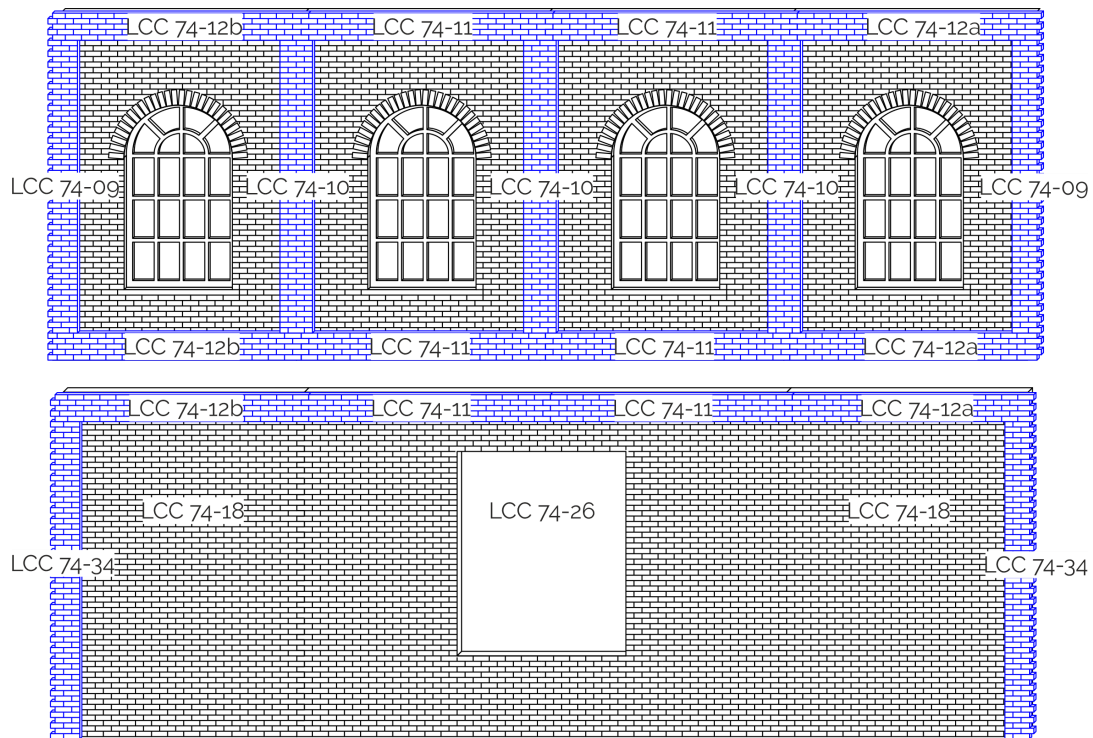
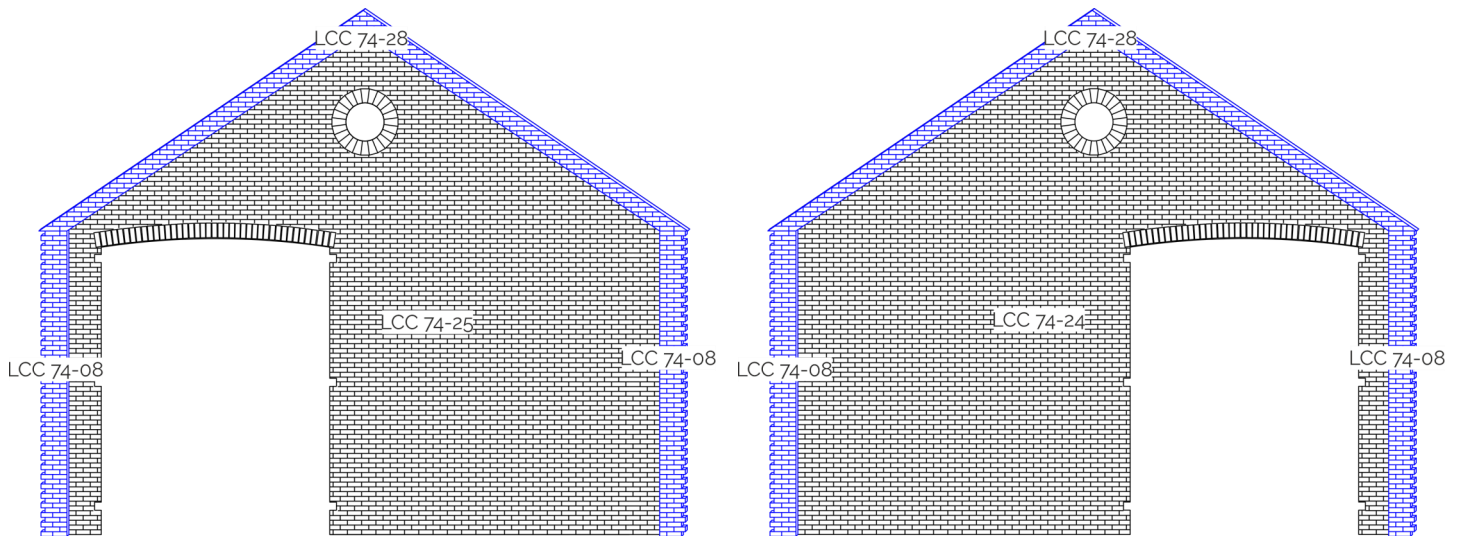
STRUCTURE



Build the structure of the goods shed first before tackling the buttresses and corners. Start by joining the walls made up of LCC 74-06, LCC 74-18, and LCC 74-26. Leave to dry. Then join the walls with the gate panels LCC 74-24 and LCC 74-25. Make sure the gate opening is on the window side.

The inner platform parts are made to be a tight fit. Due to differences between batches they may sometimes require a little bit of fettling to fit.

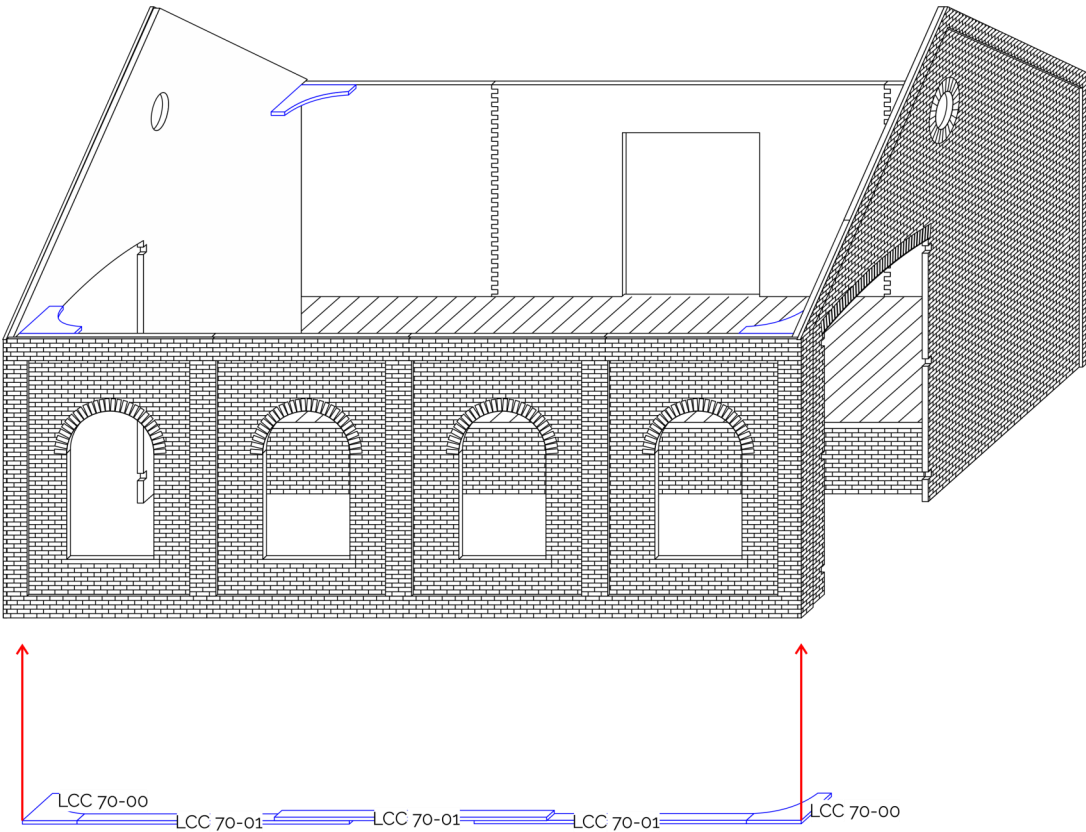
ELEVATIONS DIAGRAMS - BUTRESSES



Start with the corners (LCC 74-08, LCC 74-09, and LCC 74-34). Make sure to orient them in the same orientation as in the spruce (part number up). On gate elevations (LCC 74-24 and LCC 74-25) they should run from the bottom and meet with LCC 74-28. On the elevation with windows they should have equal space on the top and bottom for LCC 74-12. On the elevation with the gate they should run from the bottom and only have the gap on the top.

Move onto LCC 74-11 and LCC 74-12. Use the diagrams to glue them into the right places. Make note of the orientation. LCC 74-12b should go on the left side of an elevation and LCC 74-12a should go on the right side of an elevation. Glue in LCC 74-10 over the joints in panels.

WALL AND CORNER SUPPORTS



Use parts from LCC 70-00 and LCC 70-01 to stiffen the walls and corners.. They are optional parts and can be omitted if desired.

ROOF STRUTS

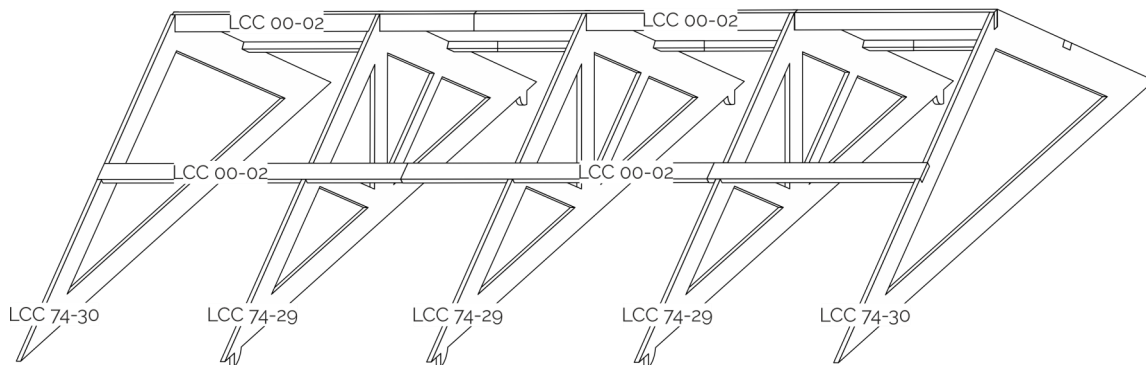
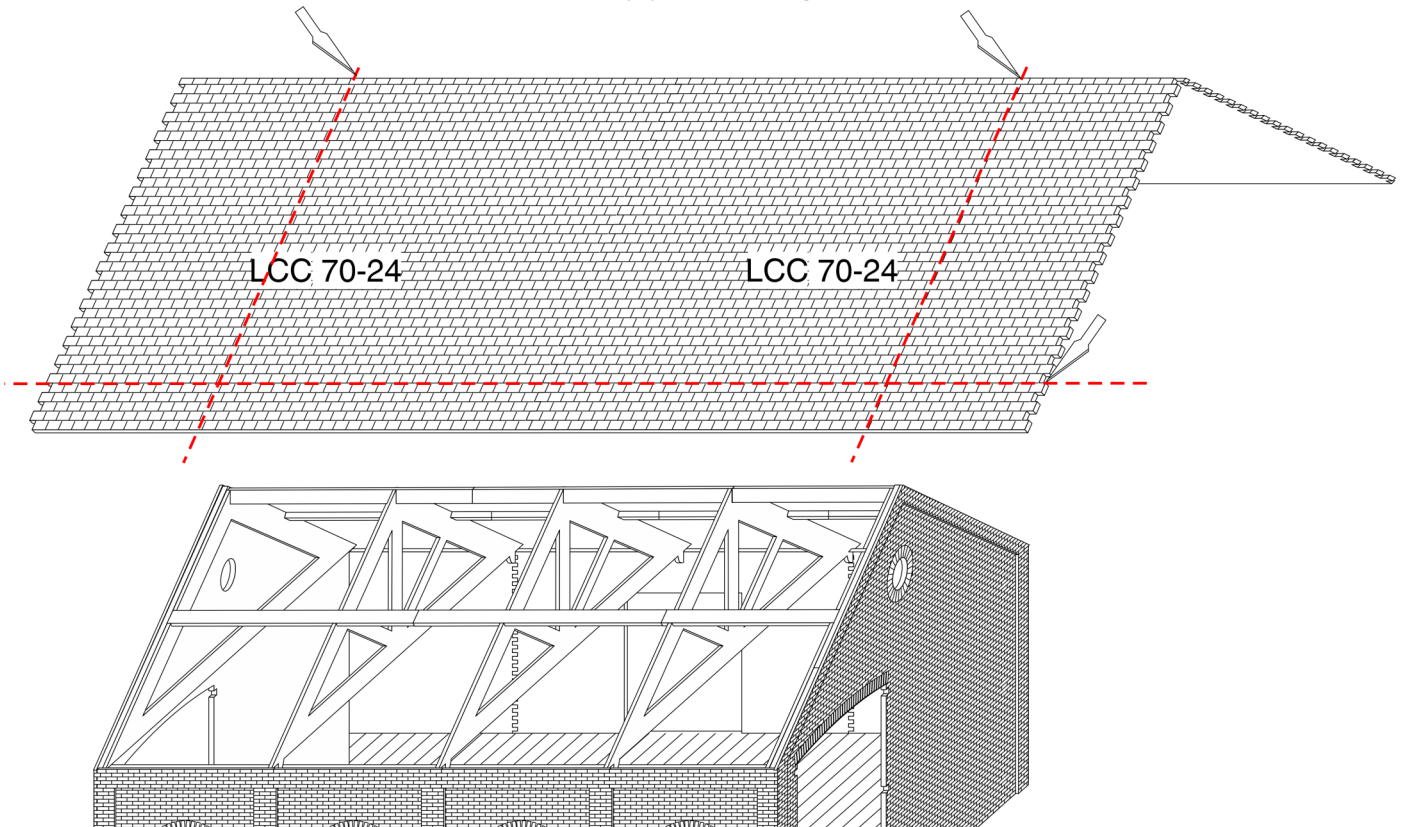


Diagram above shows the roof truss structure as if it was assembled outside of the engine shed. We recommend not to assemble it outside of the shell unless a removable roof is required.

LCC 74-30 should be glued to the back of LCC 74-24 and LCC 74-25 flush with top gable edges.

LCC 74-29 can be glued in any position but we recommend to position them over the joints in LCC 74-06. Use diagram from next page for reference.

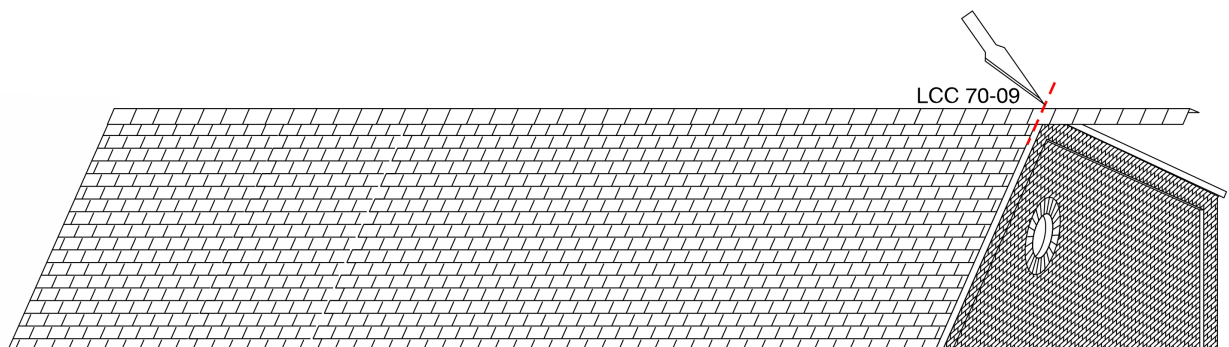
ROOF PANELS



Glue LCC 70-24 together to create two roof tile panels.

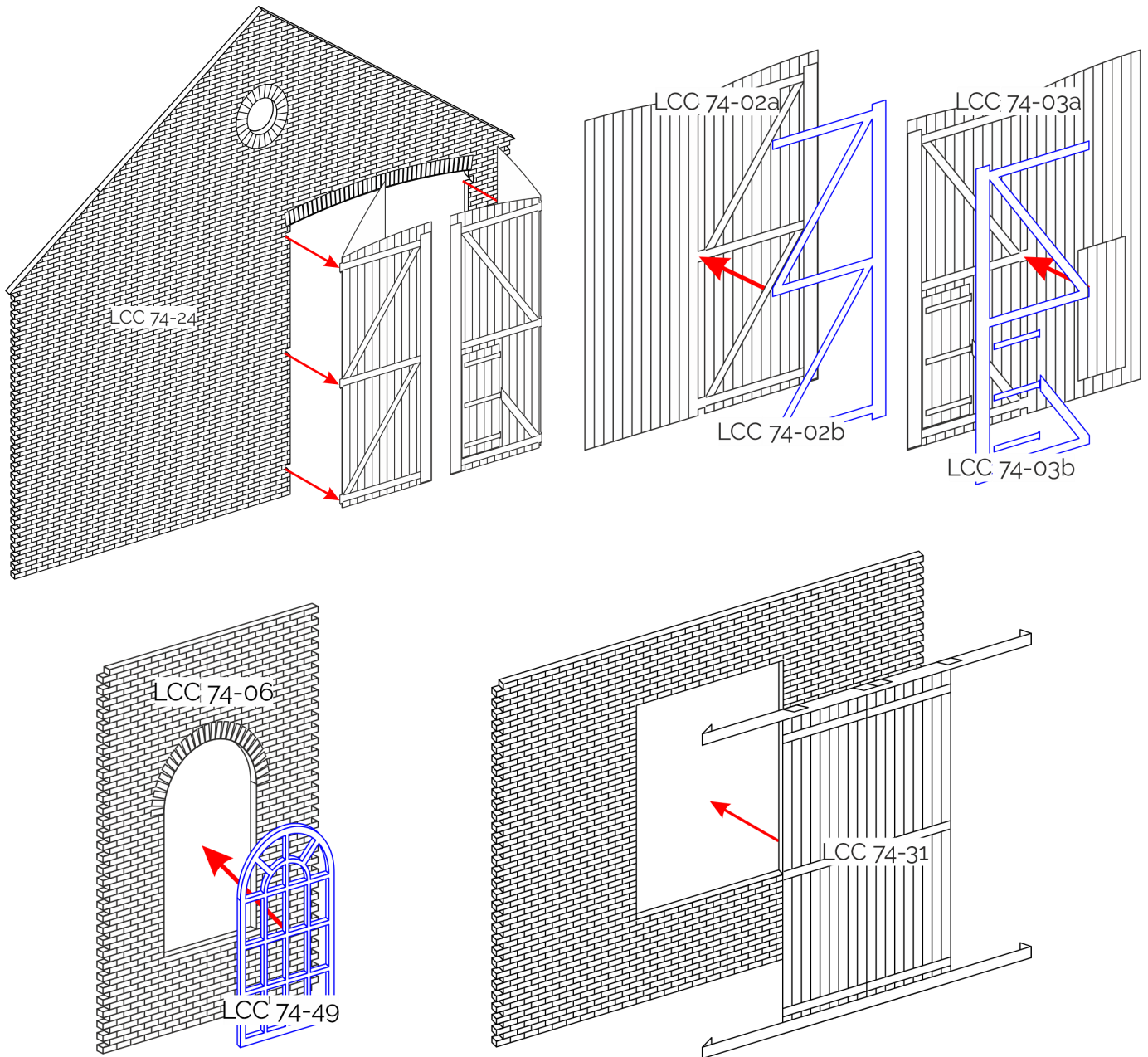
Measure the exact length required for the roof and cut to size. Roof tile panels should be flush with LCC 74-28 and should stick out half to one full tile over the sides of the building. Alternative roof can be made with BM 70-00 (not included).

RIDGE TILES



The ridge tiles (LCC 70-09) need to be folded in half and then glued over the seam between the two roof sides. Score the fold line with a hobby knife for easier folding.

WINDOWS AND GATES



After the main building was assembled and painted, paint and pre assemble the fittings.

Windows (LCC 74-49) should be fitted into the openings such that their backs are flush with back of the LCC 74-06.

Gates (LCC 74-02 and LCC 74-03) need to be folded in half. Use thinner glue and press them between two surfaces to ensure they are well bonded. The man sized door on LCC 74-03a can be made to be open. Glue the strapping in the marked locations. Gates can be glued in with the strapping either facing inside or outside.

The loading gate can be assembled either open or closed. Fold the tabs on the rails inwards. Glue them on the bottom and top of the gates, then fold the tabs on the gate panels over the rail. The tabs on the gates can be cut off if a different look of the gates is desired.